

Routes To Trade

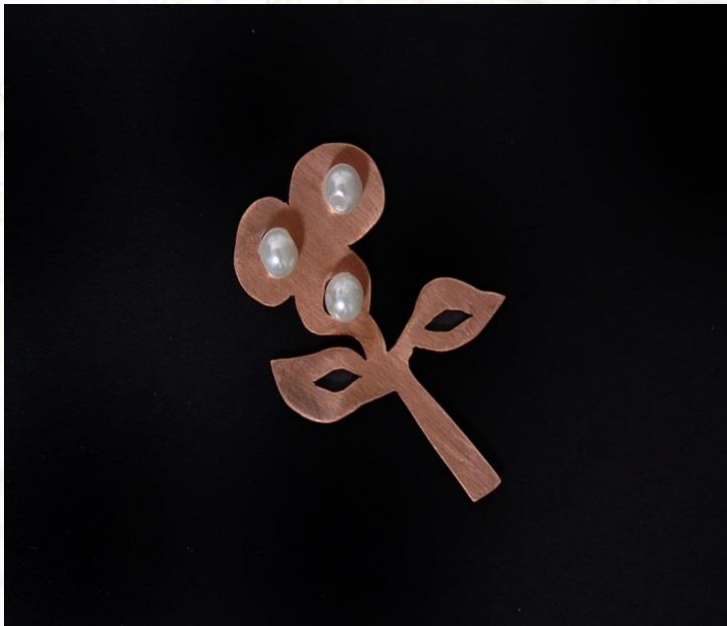
Shelanu: Women's Craft Collective

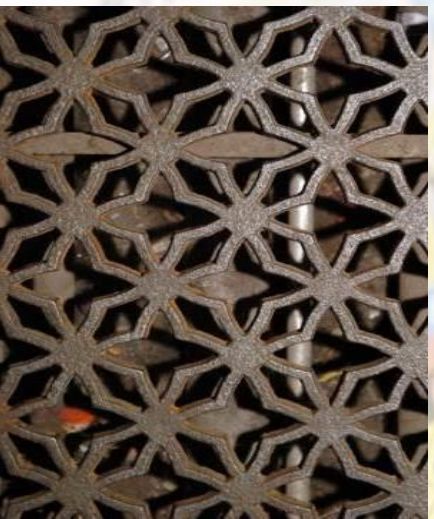


Routes To Trade

All the jewellery made in this project was in one way or another inspired by something in Birmingham.

Inspiration was taken from the canals, the cathedral & other architectural elements
This also helped the members of Shelanu get to know the city.





Inspiration

Shelanu took inspiration from many areas and buildings in the city.

The members focused on small intricate patterns and designs within bridges, windows and clocks.





Research

The group visited historical businesses in the city's famous Jewellery Quarter, to understand some of Birmingham's heritage.

They were also shown the process of lost wax casting, which would be used to create the components for their jewellery ranges.

Routes to Trade Launch

Shelanu and the range launched at The Contemporary Craft Fair, Devon in 2011.

Shelanu's jewellery was well received by the public and drew positive feedback. The team made good contacts and gained confidence in themselves and their new skills.





Shelanu exhibited the **Routes To Trade** range in the First Floor gallery at Bilston Craft Gallery in December 2011.

The exhibition was launched with an open day, and there was also a badge making family workshop led by Shelanu members.

The members also ran a second workshop during the exhibition.

These are some of the final pieces of the **Routes To Trade** project, each member completed a different collection. The work was sold at craft fairs and markets.



